

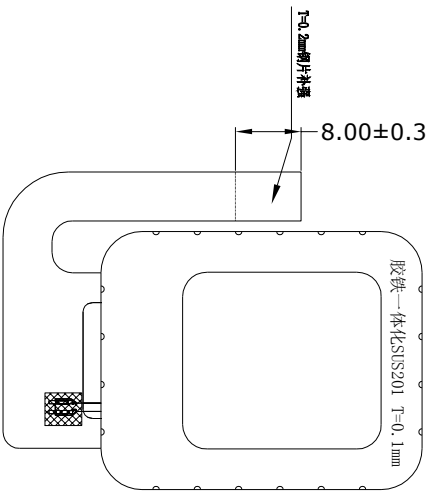
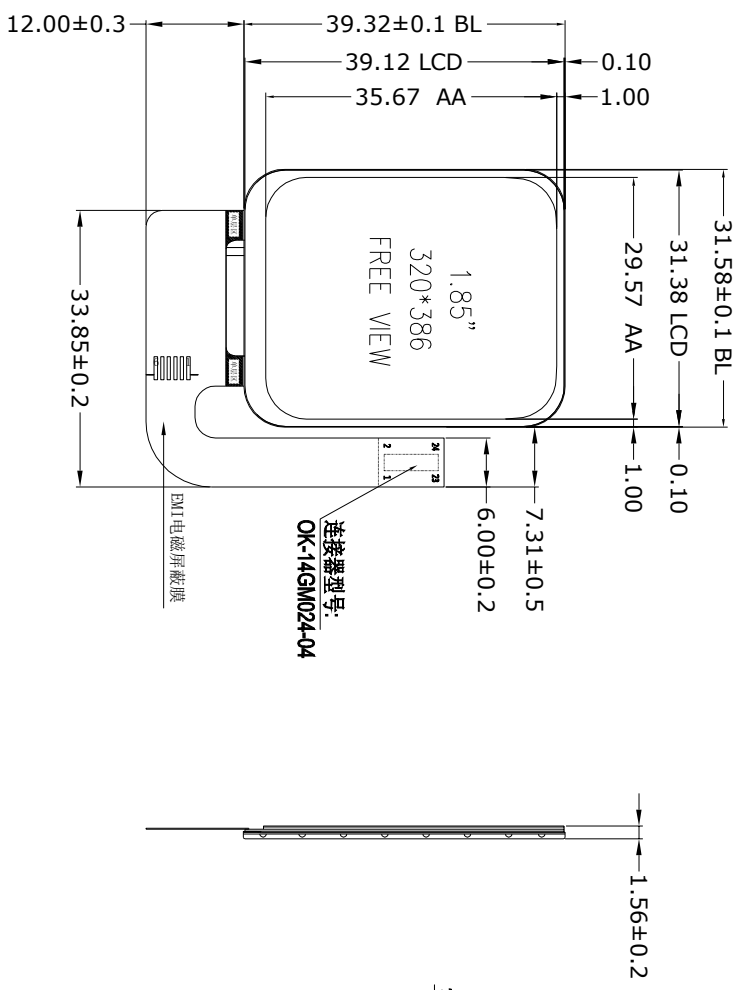
ROSH

Revision	Description	Date	Signed
A0	First	23.10.30	Allen

正视图

侧视图

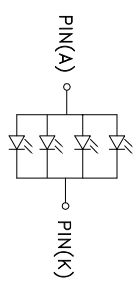
背视图



Pin#	NAME
1	SD0
2	LEBK
3	SD1
4	LCD TE
5	SD2
6	GND
7	SD3
8	GND
9	LCD CLK
10	LEBA
11	LCD CS
12	LEBA
13	LCD RST
14	LCD VDD3V3
15	CTP RST
16	LCD_VDD3V3
17	CTP INT
18	GND
19	CTP SDA
20	GND
21	CTP SCL
22	CTP VDD
23	GND
24	GND

NOTES:

1. DISPLAY TYPE: 1.85" TFT, TRANSMISSIVE
2. DRIVER IC: GC9B71
3. VIEWING DIRECTION: ALL O'CLOCK
4. BACKLIGHT: 4 pcs White LED
5. INPUT CURRENT: VCC 2.8V (typ)
6. OPERATING TEMP: -20° C ~ +70° C
7. STORAGE TEMP: -30° C ~ +80° C
8. UNDEFINED DIMENSION TOLERANCE: ±0.2mm
9. ROHS COMPLIABLY



VF=3.2V; IF=80mA
LED CIRCUIT DIAGRAM

VDD供电电压 VDD=2.8V
I²C通讯电压 VDDIO=1.8V

TP定义

Pin#	Assignment
1	TP_SCL
2	TP_SDA
3	TP_RST
4	TP_INT
5	TP_VDD
6	TP_GND

深圳市华之洋光电科技有限公司

SHENZHEN HZY PHOTOELECTRIC TECHNOLOGY CO., LTD

Customer Ref.	Model No.	Drawing Title	H21850PPBG02C-A0	
Part No.	Approve	Material	Unmarked Tolerance	Unit
Drawing No.	Checked	TLCM	±0.2	mm
Draw	Draw	Date	2023.10.30	Rev 00